



# KM-3060/2560

Document Imaging Solutions

SERIOUS BUSINESS.  
SERIOUS OUTPUT.™



 **KYOCERA**

FLEXIBLE.  
AFFORDABLE.  
POWERFUL.

# KM-3060/2



AN AFFORDABLE DOCUMENT IMAGING SYSTEM THAT DELIVERS EXCEPTIONAL PERFORMANCE WHETHER YOU ARE A SMALL BUSINESS WITH EVER-GROWING DEMANDS, OR A FAST-PACED DEPARTMENT OR WORKGROUP WITHIN A LARGER COMPANY, DOCUMENT IMAGING IS A CRITICAL COMPONENT TO YOUR DAY-TO-DAY OPERATIONS. KYOCERA MEETS YOUR NEEDS WITH THE KM-3060 AND KM-2560. COMBINING STANDARD COPY, PRINT, AND COLOR SCAN, THEY OFFER THE ADDED VALUE OF INCORPORATING OPTIONAL FAX CAPABILITIES AND OPTIONAL DOCUMENT CAPTURE AND MANAGEMENT SOLUTIONS. KYOCERA PRODUCTS AND SOLUTIONS ARE RECOGNIZED FOR BRINGING POWER, PERFORMANCE AND PRODUCTIVITY TO ANY BUSINESS ENVIRONMENT. LET US PUT THEM TO WORK FOR YOU.

## KM-3060/2560 HIGHLIGHTS

- ▶ Fast Output Speed of 30 or 25 PPM
- ▶ Standard Network Printing and Color Scanning
- ▶ Up to 2,200 Sheet Paper Capacity
- ▶ Standard Duplex
- ▶ Color Touch Screen Interface
- ▶ Optional Paper Handling and Advanced Finishing
- ▶ Optional Fax/Network Fax/Internet Fax
- ▶ Optional Document Capture and Management Solutions
- ▶ Kyocera Long Life Consumables



## POWER AND RELIABILITY YOU CAN COUNT ON.

The KM-3060 and KM-2560 multifunctional products (MFPs) are designed for small to medium sized companies and workgroups looking for a reliable and durable product that can meet the copy, print, scan and sending requirements their businesses face each day. With a 400 MHz processor, 512MB RAM (upgradeable to 1GB) and a large 80GB Hard Disk Drive (HDD), the KM-3060 and KM-2560 can accommodate the demanding output generated by these groups.

Standard features and functionality combine with an array of options, allowing users to easily copy from the device, or print, scan or fax directly from their desktop. For administrators, advanced software monitoring tools allow them to manage business processes across the network quickly and easily from a central location.

With the KM-3060 and KM-2560, Kyocera empowers companies with the tools they need to effectively meet their document needs without compromise. Kyocera innovative long life components and unparalleled reliability complete the picture, making the KM-3060 and KM-2560 the smart, economical choice for any business.

## 560

## EXCEPTIONAL COPY CAPABILITIES FOR HIGH PERFORMANCE RESULTS

The KM-3060 and KM-2560 deliver all the features and functionality a workgroup needs to meet their most demanding copy requirements, along with finishing and paper handling options for professional results. 600 x 600 dpi and 256 levels of grayscale ensure crisp, clean output. Easily programmable features such as zoom, auto centering, mirror image and much more help enhance final copies to capture the attention of your audience.

Users can easily control the copy process through Kyocera's Wide (8.5") Color Touch Screen Interface (TSI). Kyocera's Color TSI incorporates an enhanced tabbed architecture, similar to file folders, so users can easily find the features they require for creating professional looking documents every time. To facilitate the office-copying experience even further, users can create up to six (6) Shortcut Keys on the TSI main screen for the most commonly used copier features, simplifying many tasks for the end-user and improving overall copy performance.

## SEND DOCUMENT PROCESSING INTO OVERDRIVE WITH KYOCERA'S DOCUMENT BOX

Small to mid-sized workgroup environments are continually challenged to work better, faster and smarter. When it comes to document processes, this may mean consolidating the management, sharing and accessibility of hard copy and digital documents. Kyocera's Document Box addresses this need, enabling users to store scanned or printed documents to a specified Box in the KM-3060 or the KM-2560 HDD. When needed, documents stored at the device are easily accessed from the TSI or at the desktop from Kyocera Command Center. The Color TSI offers a thumbnail image of the first page for proof checking to ensure that the right document is being accessed.

Document Box consists of four (4) distinct groupings:

- **Custom Box** - With this feature, registered users can temporarily store documents in the KM-3060 or KM-2560 80GB HDD, which is useful when a multi-page document needs to be repeatedly printed.
- **Job Box** - When a particular application such as Repeat Copy or Private Print is selected, Job Box is used to store and output that specific job.
- **Removable Memory Box** - Allows users to print PDF documents directly from a USB flash drive inserted at the KM-3060 or the KM-2560, providing portability and security for confidential documents.
- **Fax Box** - Fax Box can save fax documents, which are received by facsimile communication. It can also be used for F-code Subaddress confidential reception (Fax option required).



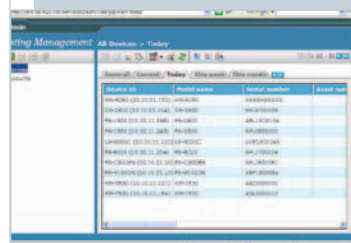
### EXCEPTIONAL PAPER HANDLING

A 2,200-sheet maximum capacity enables users to switch paper sizes and types at the touch of a button, either from the device or from the desktop.



### COLOR TOUCH SCREEN INTERFACE FOR EASY NAVIGATION

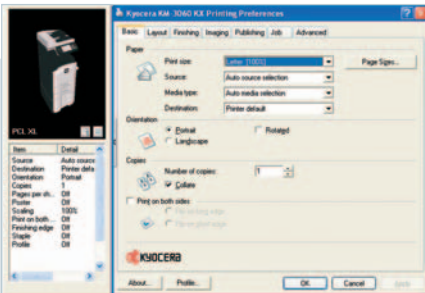
Intuitive and easy to use, the KM-3060 and KM-2560 Color Touch Screen Interface lets users quickly navigate through a variety of menu tabs to select the specific features and functionalities their copy job requires.



### DEVICE MANAGEMENT CAPABILITIES

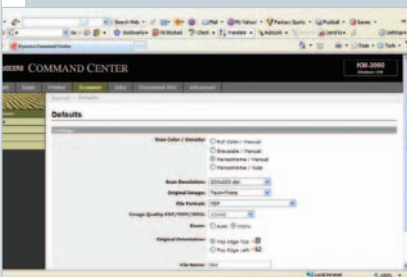
Centralized management of all connected printers, copiers and MFPs is critical to keeping workflow smooth and productive. Tools such as KMnet Admin reduce the administrative burden, while providing exceptional control capabilities, enabling businesses to respond to issues in real time.

# NETWORK PRINT



## KX DRIVER

With a common user interface on Kyocera MFPs and Printers, the KX Driver allows total control over all features while simplifying both set-up and use.



## KYOCERA COMMAND CENTER

This intuitive web-based portal makes it easy for administrators to manage devices. Set security levels, protocols, filters and device defaults with one easy to navigate interface.



## USB HOST PRINTING

With Kyocera's innovative USB Host Printing, users can install a flash drive at the control panel and print their PDF documents directly from the Touch Screen Interface.

## BRING ENHANCED CAPABILITIES TO THE NETWORK PRINT ENVIRONMENT

Connected as a network printer, the KM-3060 and KM-2560 deliver robust print speeds and high quality 600 x 600 dpi output across different paper sizes and types, while incorporating network tools to help accommodate the rigorous demands of today's businesses. A powerful 400 MHz processor combines with 512MB RAM, which is upgradeable to 1GB to handle the toughest network applications. Printing capabilities and optional advanced finishing functions are easily accessed directly from the desktop, providing exceptional output at the click of a mouse.

## THE RIGHT TOOLS FOR THE JOB - KYOCERA DRIVERS AND SOFTWARE SOLUTIONS

Kyocera supports the KM-3060 and KM-2560 with innovative drivers and software solutions to help maximize efficiency and control. Print solutions such as PDF Direct Print and PRESCRIBE enable businesses to structure more cost-effective and productive printing workflow processes from the desktop.

Kyocera's unique KX Driver is designed to improve print performance and allow businesses to take advantage of the full array of features offered by the KM-3060 and KM-2560. The KX Driver's universal interface simplifies installation and utilization. Print users can specify the number of sets, required paper handling, duplex, and stapling for document output. In addition, users can send their print jobs to the Document Box for secure output.

The KM-NET suite of software solutions further enhances the management process by providing administrators with the necessary tools for accounting, trouble-shooting, and monitoring networked devices from a central location, in a secure environment. Kyocera's PRESCRIBE solution brings added flexibility to the KM-3060 and KM-2560, allowing companies to create and manage their critical business forms and letterhead, as well as store them directly at the device to print on demand. This powerful solution allows businesses to eliminate pre-printed forms, with the added benefit of reducing overhead costs and freeing up financial resources.

# COLOR SCAN, FAX, NETWORK SOLUTIONS

KYOCERA SUPPORTS YOUR DOCUMENT IMAGING PROCESSES WITH POWERFUL SOFTWARE SOLUTION OPTIONS:

**KYO  
CAPTURE**  
EXPRESS

## SIMPLIFY THE DOCUMENT WORKFLOW PROCESS

Designed for small to medium sized businesses, this easy-to-implement solution allows you to scan and capture documents from the KM-3060 and KM-2560, then index and OCR each page for full text searching, and convert them into multiple formats to route across various destinations.

**iTag**  
Don't file it, Tag it

## ITAG DOCUMENT MANAGEMENT SOLUTION

The perfect out-of-the-box solution for businesses or departments looking to systematically organize their hardcopy documents by capturing and converting them to digital files for storing, sharing and retrieving electronically.

**KYO  
CAPTURE**  
Powered by AutoStore

## TRANSFORM THE DOCUMENT WORKFLOW PROCESS

For enterprise environments, this server-based Document Capture Workflow Solution enables the capture, process and routing of paper or electronic documents to multiple locations. Realize increased document workflow efficiencies and cost savings.

## DATA SECURITY KIT

Companies focusing on compliance and security will appreciate the value of the optional Kyocera Data Security Kit (C), which reduces security breaches and meets the privacy demands of today's office environments by overwriting the information retained in the MFP's internal memory.

## COLOR NETWORK SCAN INCREASES PRODUCTIVITY

The ability to share resources efficiently and securely enables businesses to be more productive and profitable. The KM-3060 and the KM-2560 address this need with standard color scan capabilities that allow users to send documents to multiple destinations, including e-mail addresses, FTP destinations, network folders and facsimile devices all from a single scan. Black and white TIFFs or PDFs, as well as color JPEGs, TIFFs and PDFs, can be sent quickly and securely.

Standard scanning capabilities include:

- **Scan to e-Mail** – Scan documents to any e-Mail address from the Consolidated Address Book or Corporate Directory, or type the address directly at the Color Touch Screen Interface
- **Scan to Folder** – Scan documents to any shared network folder with SMB (Server Message Block)
- **Scan to FTP** – Businesses with a FTP (File Transfer Protocol) server for sharing/downloading files can scan large files directly to the FTP server

## OPTIONAL FAX/NETWORK FAX/INTERNET FAX BOOSTS DOCUMENT COMMUNICATIONS

The KM-3060 and the KM-2560 optional Fax System provides Fax, Network Fax, and Internet Fax capabilities, offering a versatile facsimile solution that allows users to send and receive faxes both at the device and from any networked desktop computer. The KM-3060 and the KM-2560 can also receive incoming faxes and route them to the appropriate network shared folder.

## KYOCERA DOCUMENT MANAGEMENT OPTIONS EMPOWER YOUR WORKFLOW PROCESSES

Today's businesses and workgroups generate more document output than ever before – in digital and hard copy. Logically organizing workflow processes and output so that you can store, share and retrieve content as needed, is more important than ever. Kyocera is at the forefront of this charge, offering businesses of all sizes flexible solutions ranging from **KYOcapture Express**-a simple, yet robust document capture workflow solution and **iTag**-the ideal electronic document storage for small to medium sized businesses, and through our highly robust **KYOcapture, Powered by AutoStore**-a fully-featured document capture workflow solution for businesses with more advanced requirements. Integrated with select Kyocera MFPs like the KM-3060 and KM-2560, these solutions provide smart, efficient ways for businesses to streamline and organize their workflow processes while maximizing the capabilities of their hardware investment.

# KM-3060/2560 SPECIFICATIONS

## BASIC SPECIFICATIONS:

Configuration:	Workgroup Multifunctional with Standard Network Print/Color Scan System and Optional Fax. Standard 500 x 2 Paper Drawers Plus 200 Sheet Multi-Purpose Tray. Standard Duplex. Optional Document Processor. Optional Finishing and Paper Handling.
Resolution:	600 x 600 dpi / 256 Levels, Fast 1200 Print Mode
System Memory:	Standard 512MB RAM, Upgradeable to 1GB; Standard 80GB HDD
Magnification:	Full Size, 5 Reduction, 5 Enlargement Preset Ratios, Plus 25-400% Zoom
Electrical Requirements:	120V, 60Hz, 11.5A
Dimensions:	22.4"W x 24.4"D x 30.2"H
Weight:	166 lbs
Max Monthly Volume:	3060: 100,000 Pages 2560: 80,000 Pages

## OUTPUT SPEEDS:

Warm-Up Time:	Within 15 Seconds, Program During Warmup, Auto Start
First Copy Out / First Print Out:	4.7 Seconds
Pages Per Minute:	3060: 30 Letter, 15 Legal, 15 Ledger 2560: 25 Letter, 12.5 Legal, 12.5 Ledger

## PAPER SUPPLY:

Standard Paper Sources:	Dual 500 Sheet Drawers, 200 Sheet MPT, Auto Tray Selection / Switching, Add Paper While Running
Drawer Paper Size:	5.5" x 8.5" - 11" x 17"
MPT Paper Size:	5.5" x 8.5" - 11" x 17"
Std / Max Paper Capacity:	1,200 / 2,200
Paper Weight:	16 - 32 lb Bond via Paper Drawers, 12 lb Bond-110 lb Index via MPT
Input Materials:	Bond Paper, Recycled Paper, Transparencies, Labels, Envelopes

## DUPLEX UNIT:

Duplex Type:	Standard Embedded Stackless
Paper Size:	5.5" x 8.5" - 11" x 17"
Paper Weight:	17 - 21 lb Bond
Duplex Modes:	Standard 1:2, 2:2, Book: 2, 2:1

## COPY FUNCTIONS:

Control Panel:	Color Wide Touch Screen Interface
Imaging Modes:	Text, Photo, Text / Photo, Auto, Manual, ECO
Continuous Copy:	Up to 999, Auto Reset to 1
Document Box:	Custom Box, Job Box, Removable Memory Box, Fax Box (with optional Fax System)
Additional Features:	Network/Local Authentication, Auto Magnification and Paper Select, Job Build, Job Finish Notice, Status Queue, Continuous Scan, Book Mode, Combine Image, Covers, Erase Mode, Form Overlay, Image Rotate, Image Reverse, Interrupt, 50 Job Programs, Margin Shift, Mirror Image, Page Numbering, Memo Mode, 1000 Management Codes, XY Zoom, Auto Centering, Help Guidance, Preview Image

## PAPER HANDLING OPTIONS:

### DOCUMENT PROCESSOR: DP-670

Type:	Reversing Automatic Document Processor (RADF)
Acceptable Originals:	5.5" x 8.5" - 11" x 17", Mixed Size Processing
Capacity:	75 Sheet RADF / 30 Letter Size Originals Per Minute
Paper Weight:	12 - 43 lb Bond
Dimensions / Weight:	22.1"W x 19.2"D x 5.0"H / 15.5 lbs

### FINISHER: DF-730

Stack Capacity:	1,000 Sheets
Paper Size:	8.5" x 11" - 11" x 17"
Paper Weight:	16 - 28 lb Bond
Staple Capacity:	30 Sheets: 8.5" x 11"; 20 Sheets: 8.5" x 14", 11" x 17"
Edge Staple Position:	Single Position
Dimensions / Weight:	21.9"W x 20.7"D x 36.0"H / 55 lbs

### INTERNAL FINISHER: DF-670

Stack Capacity:	500 Sheets
Paper Size:	8.5" x 11" - 11" x 17"
Paper Weight:	16 - 32 lb Bond
Staple Capacity:	30 Sheets: 8.5" x 11"; 20 Sheets: 8.5" x 14", 11" x 17"
Edge Staple Position:	Single Position
Dimensions / Weight:	12.8"W x 17.8"D x 6.5"H / 17.7 lb

### DUAL PAPER DRAWERS: PF-670

Paper Capacity:	500 x 2 Sheets
Paper Weight:	16 - 28 lb Bond
Paper Size:	5.5" x 8.5" - 11" x 17"
Dimensions / Weight:	22.4"W x 24.4"D x 12.2"H / 55.2 lbs

## CONNECTIVITY:

### STANDARD NETWORK PRINT:

Controller:	Embedded PowerPC750/400 MHz Controller
Printer Memory:	Shared System Memory, Standard CF Card Slot (Type 1)
Supported PDL/Emulations:	PRESCRIBE, PCL6 (PCL XL,PCL 5e), KPDL3 (PS3), KCGI (HP-GL/2), Diablo 630, IBM ProPrinter X24, Epson LQ850, Line Printer
Fonts:	80 Outline Fonts for PCL XL/5e, 80 Outline Fonts for KPDL3, 1 Bitmap Font
Windows® OS Compatibility:	Windows® 95/98/Me/NT4.x/2000/XP/2003/Vista
Novell® OS Compatibility:	Novell NetWare® 3.x/4.x/5.x/6.x
Mac OS Compatibility:	OS 10.x
UNIX OS Compatibility:	Sun OS 4.1.x; Solaris 2.x; AIX, HP-UX (LPR)
Connectivity / Interface:	Standard 10/100BaseTX, High Speed USB 2.0
Host Interface:	Full Speed USB 2.0
Expansion Slot (2):	Optional Fax System
Supported Protocols:	TCP/IP, IPX/SPX, AppleTalk, NetBEUI
Drivers:	KX Driver for Windows®, PPD for Mac, PPD for Linux/UNIX, Certified Uni Driver, Windows® 64-bit Drivers
Utilities:	KMnet Admin, KM-NET Viewer, KM-NET for Clients, KM-NET for Accounting, PDF Direct Print
Web Interface:	Kyocera Command Center
Additional Print Features:	Secure Printing, Print Job Storage, Box Printing

### STANDARD COLOR NETWORK SCAN:

Scan Mode:	Color and Monochrome Scanning
Resolution:	200, 300, 400, 600 dpi
Scan Speed:	50 Originals Per Minute (Monochrome at 300 dpi) 30 Originals Per Minute (Monochrome at 400/600 dpi) 15 Originals Per Minute (Color)
File Formats:	Monochrome: PDF, TIFF; Color: PDF, JPG
Connectivity:	10/100BaseTX
Supported Protocols:	TCP/IP
Scanning Functions:	Scan to Folder, Scan to E-Mail, Scan to FTP, TWAIN
Driver:	TWAIN Driver
Additional Scan Features:	Consolidated Address Book, Multi-Send, LDAP, Job Finish Notice, Long Scan Mode, File Separation, File Name Entry, Send and Print, Send and Store, e-Mail Subject/Body Entry

## PRODUCT OPTIONS:

### FAX/NETWORK FAX/INTERNET FAX: FAX SYSTEM (M)

Compatibility:	Super G3
Quick Scan Speed:	1.2 SPP
Transmission Speed:	Approximately 3 Seconds per page
Modem Speed:	33.6 Kbps with Auto Fallback
Data Compression:	JBIG, MMR, MR, MH
Fax Memory:	Shared System Memory
Driver:	KM Network Fax Driver
Utilities:	Consolidated Address Book
Additional Fax Features:	Multi-Send, Duplex TX/RX, Confidential RX/TX, F-Code RX/TX, Broadcasting, Fax Box, Dual Fax

## SECURITY:

Data Security Kit (C), PDF Enhancement Kit (UG-30)

## ADDITIONAL:

Job Separator (JS-670), Fax Backup Kit (BU-10), Attachment Kit (AK-670), 512MB Memory Board, Stand

## DOCUMENT SOLUTION OPTIONS:

### iTAG: DOCUMENT MANAGEMENT SOLUTION

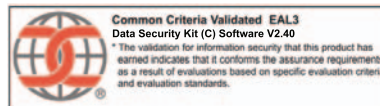
Turnkey document management solution designed for small business and workgroups

### KYOCAPTURE EXPRESS: DOCUMENT CAPTURE SOLUTION

Server based document capture application providing an automated rules based workflow at the operation panel

### KYOCAPTURE: DOCUMENT CAPTURE WORKFLOW SOLUTION

Server based document capture workflow application when business needs require more advanced document capture, processing and routing choices



Specifications and design are subject to change without notice.  
For the latest on connectivity visit [www.kyoceramita.com](http://www.kyoceramita.com).  
All trademarks are the property of their respective owners.

Kyocera Mita America, Inc. Headquarters: 225 Sand Road, PO Box 40008,  
Fairfield, NJ 07004-0008, USA  
©2008 Kyocera Mita America, Inc.  
IC# 855D400104



[www.kyoceramita.com](http://www.kyoceramita.com)